



# SUNBRIGHT INDUSTRIES

## **CERAMIC BAND HEATERS**



### **OVERVIEW**

Ceramic Insulated Band Heaters can meet the demand for energy conservation & operation efficiency. They are capable of generating higher temperatures essential to process today's resins. A helically wound resistance coil made from nickel-chrome wire is precisely strung through specially designed ceramic insulating bricks, forming a flexible heating mat.

The ceramic band heaters have the designs of spirally wound interior resistance coils. All these coils are all evenly threaded through the application of insulated tiles made of ceramic and which interlocks. The main ceramic core that has a mat of tiles is housed under a stainless sheet of steel which has its edges serrated. The superb quality assembly of the ceramic band heater offers the very essential flexible heating system yielding efficient transmission of heat and conduction. All the heat of the ceramic band originates from the inner coils which are capable of conducting heat at high temperatures. The coil delivers all the heat through ceramic tiles thus radiating all the energy to the barrel. All the styles can also be suitably matched with various configurations. Heat transfers of ceramic band heaters are never compromised for the presence of irregular surfaces or loose fits.



### **FOR ENQUIRY**

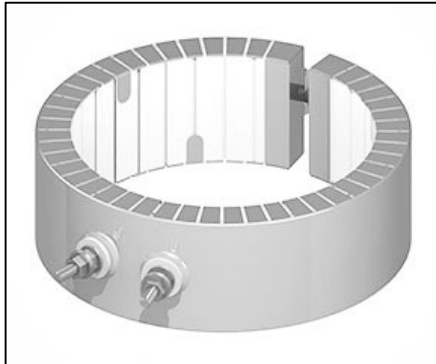
Call us: - 020-27484756 / 9049918253 / 9422088017

Fax: - 020-27458946, Email-id: - [sunbrightindustries@yahoo.co.in](mailto:sunbrightindustries@yahoo.co.in)



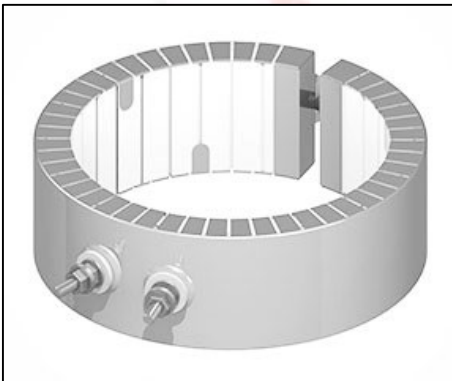
## TERMINATION OPTIONS

### ➤ HORIZONTAL POST TERMINALS



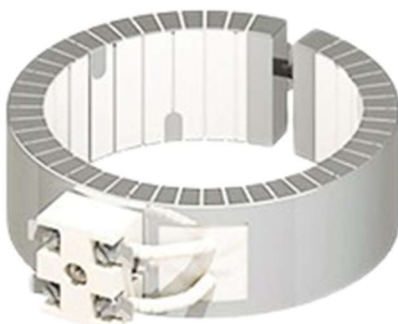
Ceramic covers with openings for loads are screwed onto post terminals providing a convenient, economical insulator. Can be provided on heater length 50 mm or more.

### ➤ VERTICAL POST TERMINALS



Ceramic covers with openings for loads are screwed onto post terminals providing a convenient, economical insulator. Can be provided on heater length 40 mm or more.

### ➤ CERAMIC BLOCK TYPE TERMINATION



Ceramic connector type terminal with metal protecting cover for easy wiring & wiring bunch. Easy to replace.

### FOR ENQUIRY

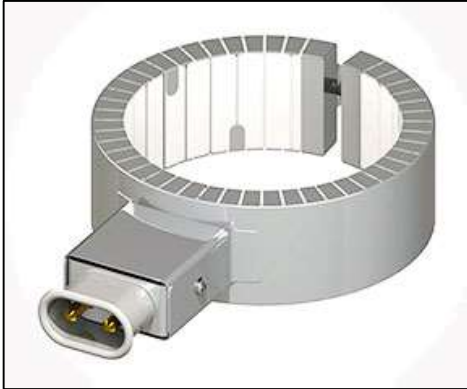
Call us: - 020-27484756 / 9049918253 / 9422088017

Fax: - 020-27458946, Email-id: - sunbrightindustries@yahoo.co.in



# SUNBRIGHT INDUSTRIES

## ➤ HIGH TEMPERATURE QUICK DISCONNECT PLUG



This assembly eliminates all live exposed terminals and electrical wiring that can be potential hazard to employees or machine. Can be provided on heater length of 40mm or more. Recommended for heater capacity up to 2.5KW.

## CLAMPING OPTIONS

### ➤ SPRING LOADED SCREW CLAMP



provides excellent grip of the heater mounted vertically.

### ➤ STANDARD ALLEN BOLT CLAMP



Allen bolt with standard clamping system generally used on all heaters.

### FOR ENQUIRY

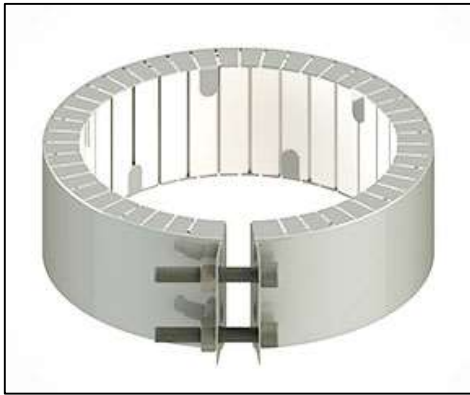
Call us: - 020-27484756 / 9049918253 / 9422088017

Fax: - 020-27458946, Email-id: - sunbrightindustries@yahoo.co.in



# SUNBRIGHT INDUSTRIES

## ➤ FLANGE TYPE CLAMP



A Bent Outward Flange is an additional Clamping Option which can be used.

## TECHNICAL SPECIFICATION

Resistance	+10% -5%
Wattage	+5% -10%
Max. Watt Density	8 watts / sq.cm
Voltage	220V AC to 480V AC
Minimum Dia.	38 mm
Minimum Width	25 mm
Overall Thickness	15 mm
Maximum Temp	800 oC
Watt Density	3.5 W/cm <sup>2</sup> (Specific)
Voltage	24 -480 V
Diameter	25 - 1000 mm
Sheath Material	Aluminum, COATED SS
Maximum Temp	800 oC

### FOR ENQUIRY

Call us: - 020-27484756 / 9049918253 / 9422088017

Fax: - 020-27458946, Email-id: - sunbrightindustries@yahoo.co.in



# SUNBRIGHT INDUSTRIES

## INSTALLATION & MAINTENANCE

- ✓ The surface of the barrel and ceramic band heater must be clean and free from all contaminants that might liquefy under heat and find their way into the heater elements, carbonizing and becoming conductive.
- ✓ Ceramic heater works on conduction and radiation principle and they do not require the same clamping force essential on all other types of band heaters
- ✓ To prevent the overheating and heater failure, adequate temperature controllers should be installed.
- ✓ Eliminate contamination of oil, plastic, dirt etc on cylinder surface
- ✓ Keep all electrical connections properly protected to avoid accident

## FEATURES

- ✓ Excellent dielectric strength at high temperatures with high voltages.
- ✓ Ability to interlock and provide a more rigid structure.
- ✓ The flexible design allows easy install and removal.
- ✓ Reduces the chances of damaging internal coils in transit and handling.
- ✓ APPLICATIONS
- ✓ Injection Molding Machine
- ✓ Compounding
- ✓ Blow molding
- ✓ Plastic Processing Machinery.
- ✓ Extrusion Line

### FOR ENQUIRY

Call us: - 020-27484756 / 9049918253 / 9422088017

Fax: - 020-27458946, Email-id: - sunbrightindustries@yahoo.co.in